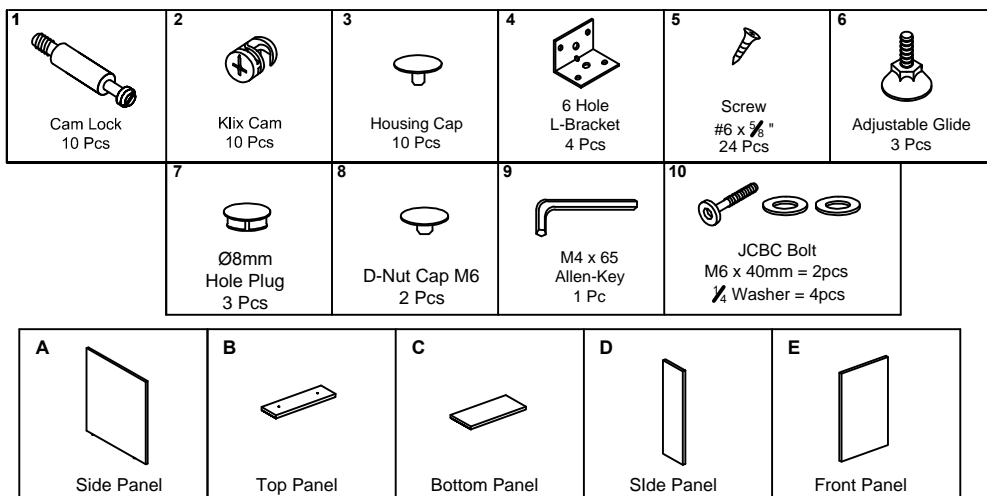
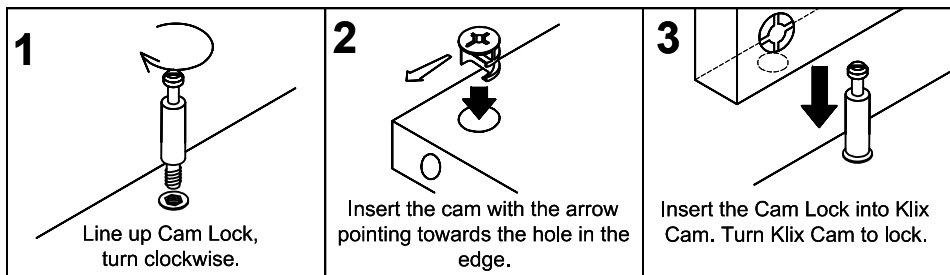


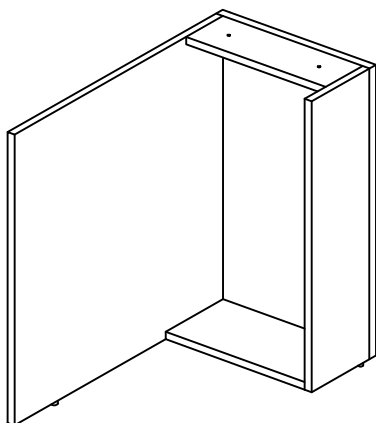
Please follow these instructions for easy assembly.



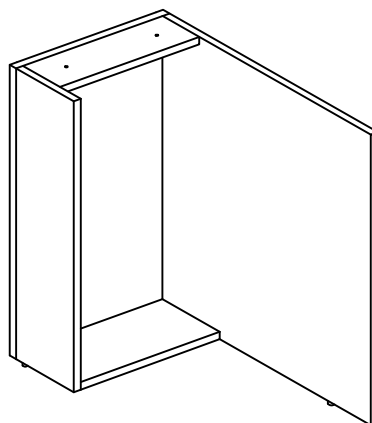
KLIX CAM INSTRUCTIONS



L



R

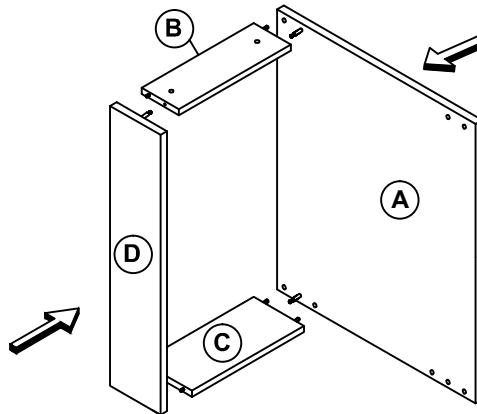


IMPORTANT !!

- Place all wooden parts on a clean and smooth surface such as a rug or carpet to avoid the parts from being scratched.
- Check that you have all parts and hardware.
- Remove all wrapping materials, including staples & packing straps before you start to assemble.
- Do not tighten any screws or bolts until the unit is completely assembled.
- Keep all hardware parts out of reach of children.

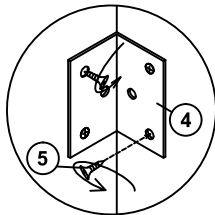
1

Attach Top Panel (B) & Bottom Panel (C) to Side Panel (A) & Side Panel (D) by using Cam Lock (1) and Klix Cam (2).

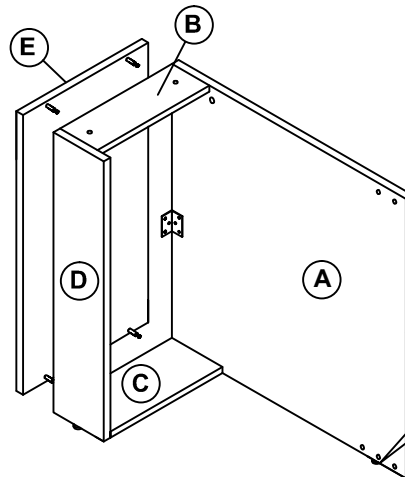


2

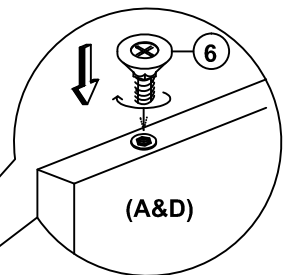
Attach Front Panel (E) to Side Panel (A) & Side Panel (D) by using Cam Lock (1) and Klix Cam (2).



Attach L-Bracket (4) to Front Panel (E) and Side Panel (A) / Side Panel (D) with screw (5).



Screw Adjustable Glide (6) into bottom of Side Panel (A) & Side Panel (D).

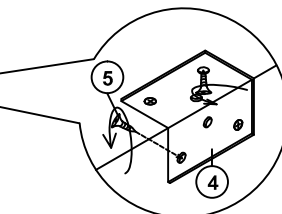
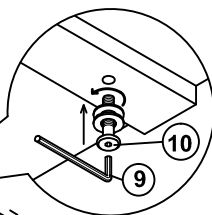


3

worksurface

Mount False Pedestal to underside of worksurface by using JCBC Bolt (10).

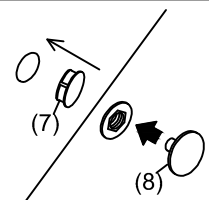
*JCBC Bolt with 2 washers per bolt



Attach L-Bracket (4) to worksurface and Side Panel (A) with screw (5).

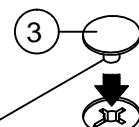
Attach False Pedestal to worksurface by using Cam Lock (1) and Klix Cam (2).

4



Insert the Hole Plug (7) and D-nut Cap (8) to all drill hole of the other edge of Side Panel (A) which the hole are not in use.

5



Attach Housing Cap (3) to all Klix Cam (2) by pushing neck through center of cam.